

A close-up photograph of two hands clasped together. The hand on the left is wearing a white long-sleeved shirt and a red beaded bracelet. The hand on the right has blue nail polish. The background is blurred, showing a person in a blue hospital gown.

# 2018 ANNUAL REPORT

---

EUROPEAN ASSOCIATION OF SERVICE  
PROVIDERS FOR PERSONS WITH  
DISABILITES

# WHO WE ARE

---

Located in Brussels, the European Association of Service providers for Persons with Disabilities (EASPD) represents over 17,000 support service providers for persons with disabilities.

Driven by our members and supported by a team of professional staff, EASPD strives to deliver high-quality services that promote the full participation and inclusion in society of all persons with disabilities. Alongside our 160 members we strongly believe that support services for people with disabilities play a major role in enabling people to enjoy their human rights on equal basis with others.

Since its establishment in 1996, EASPD has promoted the provision of effective and high-quality service systems across Europe which empower people with disabilities.



# CONTENTS

<b>4</b>	<b>Foreward</b>
<b>5</b>	What we do
<b>6</b>	Governance
<b>7</b>	Executive Committee
<b>8</b>	Secretariat
<b>9</b>	Lets Commit!
<b>10</b>	<b>Representation</b>
	Partnerships
<b>15</b>	Key areas of work
<b>24</b>	Annual Conferences
<b>30</b>	<b>Innovation and Know-How</b>
	Projects
<b>41</b>	Publications
<b>44</b>	Latest initiatives
<b>45</b>	Knowledge sharing
<b>47</b>	<b>Members Led Approach</b>
	New members
<b>49</b>	EASPD working groups
<b>52</b>	Provider Forums
<b>53</b>	Humans of EASPD
<b>54</b>	Communications network
<b>55</b>	<b>Financial Report</b>
<b>56</b>	<b>Conclusions</b>

# MESSAGE FROM OUR PRESIDENT

JAMES CROWE

I am delighted to introduce our Annual Report for 2018.

I trust that it will amply demonstrate to you, our reader, the range of the many actions we undertook during 2018 to promote the interests of our members, to assist them in developing their practice as service providers and to strengthen their participation in EASPD. It was an

## EXCITING AND VERY BUSY YEAR

as we began to implement our new 'Commit' multi annual strategy and as our reach across the continent of Europe continued to grow. Nothing that we do is undertaken without the active engagement of our members, working with many partners and government agencies. I thank all of them for their assistance.

Our achievements in 2018 would never have happened without the commitment and hard work of our Honorary Officers, the Board, our staff and volunteers and our Secretary General, Luk Zelderloo.

On behalf of all our members, partners and supporters I thank them sincerely.

**James Crowe**

EASPD President



# WHAT WE DO

To maximise the benefits of our work in Brussels and across Europe, we focus our attention on three key pillars:



Have an **impact** on European policy in our areas of interest



Stay **informed** and update our members and partners regarding the latest developments



Foster **innovation** at all levels of service provision throughout Europe

Working through its core thematic groups EASPD and its membership aim to realise these key pillars and address important topics of interest for service providers for people with disabilities. These topics include Employment, Education, Inclusive Living, Person-centred Technology, Early Intervention, Workforce Development and Human Resources as well as Arts and Culture

## OUR VISION



EASPD's vision for the future is for any type of support to be individualised and available, accessible and responsive to the needs and wishes of persons with disabilities. Human rights-based support services play an important role in granting access, participation and inclusion in society. We want society to fully understand that these support services are human rights enablers.



## OUR MISSION

EASPD's mission is to deliver the implementation of the United Nations Convention on the Rights of Persons with Disabilities by supporting its members in the design, development and set up of individualised models of support, responsive to specific needs and wishes. EASPD promotes the sharing and development of information and innovation while also working to influence decision making mechanisms at European and international level.

# GOVERNANCE AND STRUCTURE

## TOOL TO MONITOR PROGRESS ON THE IMPLEMENTATION OF EASPD STRATEGY "COMMIT!"

With the adoption of the EASPD Strategy "Commit!" EASPD has developed a tool to effectively monitor progress and achievements of the strategic objectives on an annual basis, as well as to formulate recommendations for the years to come.

The EASPD Strategy "Commit!" monitoring tool examines the strategic objectives and activities by identifying Key Performance Indicators (KPIs) which are linked to each activity, targets and supporting initiatives. The tool set up allows to describe and execute the strategy while measuring the effectiveness of each activity against the strategic objectives. Moreover, it serves as a compass to ensure an overall alignment with the vision of the organisation.

## COMPLAINT MECHANISM

In a fast growing organisation things might go wrong. Anticipating this, a 4-steps complaint mechanism was developed by a taskforce and adopted by the board. This mechanism will become operational after the appointment and set-up of the 'Independent Complaints Committee' composed by 3 members plus 1 alternate during the first general meeting in 2019 (RO).

## GOVERNANCE REVIEW

After over 20 years of existence our governance structure, Statutes and Standing orders should be updated to prepare the organisation for the future! At the end of 2018 a taskforce was set up and a timeline agreed with the board. During 2019 renewed statutes and standing orders will be further discussed and implemented. The working methods and procedures will be updated.

The taskforce composition: Mineke Hardeman (NL), James Churchill (UK) and Vlado Krstovski (North Macedonia). This taskforce is guided by a Belgian lawyer specialised in not-for-profit law.

# EXECUTIVE COMMITTEE



**James Crowe**  
President



**Peter Saxenhofer**  
Treasurer  
INSOS  
Switzerland



**Valerija Bužan**  
Vice-President  
CUDV DRAGA  
Slovenia



**Fabrizio Fea**  
Vice-President  
Associazione Scuola  
Viva onlus  
Italy



**Kirsi Konola**  
Vice-President  
KVPS  
Finland



**Luk Zelderloo**  
Secretary General  
(Ex officio)

In October 2018 we were happy to welcome Peter Saxenhofer as new EASPD Treasurer!



We also said a fond farewell to Bernadette Grosyeux

# BOARD MEMBERS



**Akos Pordan**  
Hand in Hand Foundation  
Hungary



**Cristian Rovira**  
CONACEE  
Spain



**Evert-Jan Hoogerwerf**  
AIAS Bologna onlus  
Italy



**John Dolan**  
Disability Federation  
Ireland



**Karin Astegger**  
Lebenshilfe Salzburg  
Austria



**Kathrin Voelker**  
BAG WfbM  
Germany



**Lieve Dekempeneer**  
De Lork VZW  
Belgium



**Marleen Clissen**  
Katholiek Onderwijs Vlaanderen  
Belgium



**Vasilka Dimoska**  
Poraka  
Republic of North Macedonia



**Georgi Georgev**  
NASO  
Bulgaria



**Henri-Pierre Laguarrigue**  
L'ADAPT France  
Sadly passed away 16th March, 2019



**Miguel Valles**  
Mira Sintra  
Portugal



**Noor Van Loen**  
EurlyAid  
Netherlands



**Jose Maria Solé I Chavero**  
SUPPORT  
Spain

In June 2018 we warmly welcomed Jose Maria Solé I Chavero to the EASPD board!

# SECRETARIAT



**Luk Zelderloo**  
Secretary General



**Carmen Arroyo de Sande**  
Development Manager



**Asel Kadyrbaeva**  
Research & Development  
Officer



**Domenico Manente**  
Project Officer



**Claire Cambier**  
Junior Project Officer



**Sandra Nicolau Lima**  
Learning and Development  
Officer

**DEVELOPMENT,  
RESEARCH  
AND  
INNOVATION  
(DRI) TEAM**



**Sabrina Ferraina**  
Policy Manager



**Timothy Ghilain**  
Senior Policy Officer



**Thomas Bignal**  
Investment Policy Advisor



**Lea Rollin**  
Junior Policy Officer

**POLICY TEAM**



**Rachel Vaughan**  
External Communications  
Officer



**Adriana Popa**  
Membership Officer



**Sonia Staskowiak**  
Finance Officer



**Jeff Van Hecke**  
Events Officer



**Sydney von Ihering**  
Communication and Project  
Officer

**OPERATIONS  
TEAM**

## OUR VOLUNTEERS



**Miguel Neira-Mira**



**Dionyssi Antanasiotis**



**Franziska Krueger**



**David Lysaght**



**Sergi Queralt**



**Erisa Zemzadja**



**Melanie Soylu**



**André Felix**



**Pepe Escrig**

**LEFT FOR NEW ADVENTURES!**



# LET'S COMMIT!

---

EASPD is an independent, democratic and participatory organisation governed by our General Assembly and an elected Board and Executive Committee. Every four years our Board, with the mandate of our General Assembly, decides upon a set of strategic choices which support the continuous improvement of services, that help to realise the full implementation of the UN CRPD.

2018 marked the first year of our new Multiannual Strategy: "Commit!" which reaffirms our commitment to human rights-based support services and our key role in creating a more Social Europe.

"Commit!" is built around three main strategic objectives:

- ➔ **Representation**
- ➔ **Innovation and Know-How**
- ➔ **Member-led approach**



# REPRESENTATION

This year EASPD has strived to be the key representative of support service providers in Europe, ensuring the full recognition of the role of the support service providers sector in Europe. Crucially EASPD has worked to connect European and international policies with national and local priorities to promote social inclusion.

## PARTNERSHIPS

### TASKFORCE FOR THE SERVICES OF TOMORROW

In 2018 EASPD continued to work alongside the European Disability Forum, COFACE Families-Europe, European Network Independent Living, Inclusion Europe and Mental Health Europe, in the Taskforce "Support Services of Tomorrow." Together the Taskforce co-hosted the event, 'Co-producing employment initiatives for young persons with disabilities and mental health problems' alongside MEP Brando Benifei in January. The event engaged MEPs, European Commission officials, social service providers, employers, persons with disabilities, as well as civil society, to share best practices and discuss how we can empower all stakeholders in the co-design, co-development and co-delivery of inclusive employment practices.

In December, on the European Day of Persons with Disabilities, the Taskforce resigned their Joint Declaration on Support Services of Tomorrow, committing themselves to working together for another 2 years to facilitate the development of co-produced, high quality support services that enable the full inclusion of all.



## COLLABORATION WITH EUROPEAN UNION FOR SUPPORTED EMPLOYMENT

EASPD continued its collaboration with the European Union for Supported Employment (EUSE). On 27th September alongside our member, Dabei-Austria, EASPD co-hosted the "Employment for All" conference with EUSE as well as the European Platform for Rehabilitation, Austrian Disability Council and the Austrian Federal Ministry of Labour, Social Affairs and Consumer Protection in Vienna, Austria.

Together with over 250 participants, speakers and experts from across Europe we discussed the next steps towards a joint declaration that includes measures to enable all persons with disabilities to participate in the labour market.



## EUROPEAN COMMISSION'S WORKING GROUP ON EARLY CHILDHOOD EDUCATION AND CARE



In November 2018 EASPD joined other civil society organisations, Commission and Member State representatives and experts as the founding members of European Commission's newly formed Working Group on Early Childhood Education and Care (ECEC). The Working Group will support Member States in the field of Early Childhood Education and Care, providing a platform for them to exchange experiences and good practices, learn from each other and develop targeted policy guidance.

# COLLABORATION WITH THE EUROPEAN COMMISSION ON THE HIGH LEVEL GROUP ON DISABILITY

EASPD is part of the High-Level Group on Disability and takes part in its biannual meetings. As part of the group, EASPD had the opportunity to raise issues such as the relevance of EU funds to support social services development, the need to better invest into inclusive employment models and the relevance of social economy enterprises and the relevance of person-centred technology to promote independence for persons with disabilities.

## EUROPEAN DAY OF PERSONS WITH DISABILITIES

At the European Commission's conference on the European Day of Persons with Disabilities, Secretary General Luk Zelderloo presented the potential of the next EU budget for the development of support services in the disability field..



## WORK FORUM

Our EASPD Secretary General Luk Zelderloo participated in the annual Work Forum and gave a presentation on a "Training and awareness-raising campaign among service providers" highlighting the need for service providers for new HR policies, training on the human rights model of disability and awareness raising about support models in order to develop person-centred support services.

## EUROPEAN EXPERT GROUP ON TRANSITION FROM INSTITUTIONAL TO COMMUNITY-BASED CARE

In 2018, EASPD Policy Manager Sabrina Ferraina acted as Co-chair of the European Expert Group on transition from institutional to community-based care (EEG). The EEG was highly active in debates related to the next EU budget, the European Semester and the provision of community-based care and services. As part of its awareness raising and lobbying activities a roundtable was held in the European Parliament to discuss about the future of the EU Structural Funds, as well as several meetings took place with EU policy makers. The EEG also co-organised a conference on deinstitutionalisation in cooperation with the EU Agency for Fundamental Rights in parallel to the events related to the European Day of Persons with Disabilities.



# COLLABORATION TO AID THE PROCESS OF DEINSTITUTIONALISATION (DI)

## NORTH MACEDONIA

EASPD provided technical support to the authorities of North Macedonia in their DI process. This was funded by the UN Development Programme.

## HUNGARY

EASPD cooperated with Equal Opportunities of Persons with Disabilities Non-profit (FSZK) – a Hungarian agency, providing recommendations on their ongoing deinstitutionalisation project. In the framework of this cooperation, next to guidelines, a training and a few experts meetings were organised bringing together different stakeholders, researchers and staff in social services.



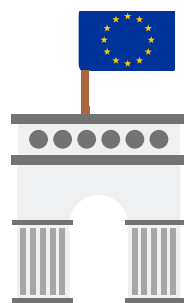
# KEY AREAS OF WORK

## EUROPEAN PILLAR OF SOCIAL RIGHTS

Launched in November 2017 the European Pillar of Social Rights (EPSR) provides the EU with a compass for the effective delivery of social rights for citizens. Comprised of 20 key principles, the Pillar aims to deliver equal opportunities and access to the labour market, fair working conditions and social protection and inclusion. The provision of high quality care and support services as well as community based social infrastructure are key to the correct implementation of many of the Pillar's principles. To support its full realisation, EASPD continues to highlight the main concerns of support services providers in the disability field in relation to the Pillar's principles and provide recommendations on how the European Union can ensure that the Pillar really makes a difference to improve the lives of people on the ground.



## WHAT HAVE WE DONE IN 2018?



## **EASPD report on the European Semester and the European Pillar of Social Rights**

In October EASPD released its report '**The European Semester and the European Pillar of Social Rights: Support services as key players in the implementation of the European Pillar of Social Rights.**'

Written with the support of EASPD members, the report contains a number of national reports from Austria, Bulgaria, Finland, Greece, Romania, Spain, Portugal and Slovakia which highlight specific concerns of the sector in the implementation of the Pillar and provide a number of recommendations to address these challenges. The results of this report were presented at EASPD's Policy Seminar on 17th October.

**EASPD will continue to monitor closely all developments concerning social care reforms and innovation in the disability field through the European Semester process with particular focus on the European Pillar of Social Rights implementation, seeking active cooperation with its members and the EU institutions.**

## **Event with Social Services Europe: Towards the Implementation of the European Pillar of Social Rights - The Role of Social Services**

On 24th April, EASPD and its partners in Social Services Europe co-hosted an event in the European Parliament to present their position paper on the key role social services play in the implementation of the European Pillar of Social Rights. The event was hosted by MEP Georgi Pirinski, with the participation of MEP Sofia Ribeiro alongside representatives of the European Commission and Social Protection Committee. The debates that took place during the event addressed some key challenges and made concrete proposals on how social services can help to implement the EPSR.



During the event, the incumbent President of Social Services Europe and Secretary-General of EASPD, Luk Zelderloo reinforced that the EPSR will only work if it works for the citizens, and that means taking action.



**We shouldn't hide our head in the sand; we should clarify our role as social service providers in the Pillar.**

Luk Zelderloo



## **SOCIAL INVESTMENT**

One of the priorities of EASPD's Commit! Strategy is ensuring the sustainability of support services by securing the provision of funding and investment systems that assist support services and facilitate innovation.



### **TO ACHIEVE THIS GOAL IN 2018 WE:**

#### **Organised Social Investment events across Europe**

In 2018 EASPD and its members hosted 10 national investment events in France, Belgium, Portugal, Czech Republic, Austria, Ireland, Hungary, Finland and Bulgaria.

These events provided support services with the opportunity to learn about how EU instruments can support them in accessing financing opportunities as well as explore possibilities for developing social impact investment ecosystem nationally and regionally.

The last Social Investment event in 2018 was on the 18th October. Together with Housing Europe, EuroHealthNet, FEANTSA, AGE Platform Europe and the Lifelong Learning Platform, EASPD co-organised the European Conference on "Social Infrastructure Investment: from local innovative ideas to InvestEU funded projects". The Conference provided an opportunity for the organisers – representing major stakeholders in the social, health, education and housing sectors – to engage with authorities and investors on the steps required to make InvestEU a success for Social Infrastructure Investment. Four steps emerged: a focus on quality, sectoral involvement, capacity building for all and making full use of the available fiscal flexibility

## **Contributed to the High-level Taskforce Report on Investing in Social Infrastructure**

On the 23rd January, the High-Level Taskforce on Investing in Social Infrastructure in Europe published their report on how to boost investment in healthcare, long-term care, education and social housing in the European Union. The report highlighted that investments in Social Infrastructure in the EU have decreased by 20% since 2009 and that the investment gap is estimated at €150 billion per year for the next ten years.

To ensure that the EU closes this funding gap the report recommends practical steps that the European Union and relevant stakeholders should take. As a member of the High-Level Task Force, EASPD contributed with our broad experience of investment in the social sectors.

**It is clear that confronting growing inequality and divergence in Europe represents the greatest challenge to overcome, together with the need to give fresh impetus to investment in social infrastructure and human capital in Europe.**

## Council of European Bank Workshop

On the 7th November, EASPD led a capacity building workshop with staff from the Council of Europe Development Bank to present and exchange views on the investment needs in the social care and support sector; with a particular emphasis on European countries outside of the EU (Balkan states, Armenia, Georgia, etc).

## Led the creation of the Steering Board for Social Infrastructure

One of the major trends in social service provision is the transition to community-based services; a process which included the integration of a variety of different services: health, education, housing, ageing, etc. Similar processes are happening in these other sectors too, where all are moving towards some form of integration of services.

As such, quality investments into these fields also increasingly have to require investments into multi-dimensional social projects. For this reason, EASPD brought together Eurohealthnet, the Lifelong Learning Platform, Housing Europe, the AGE Platform and Feantsa with the aim of setting-up the Steering Board for Social Infrastructure in order to facilitate cross-sectoral exchange, provide a unique counterpart to the EU institutions, build up capacity at national level and develop a pool of investible projects. The Steering Board for Social Infrastructure met 7 times in 2018 and developed together:

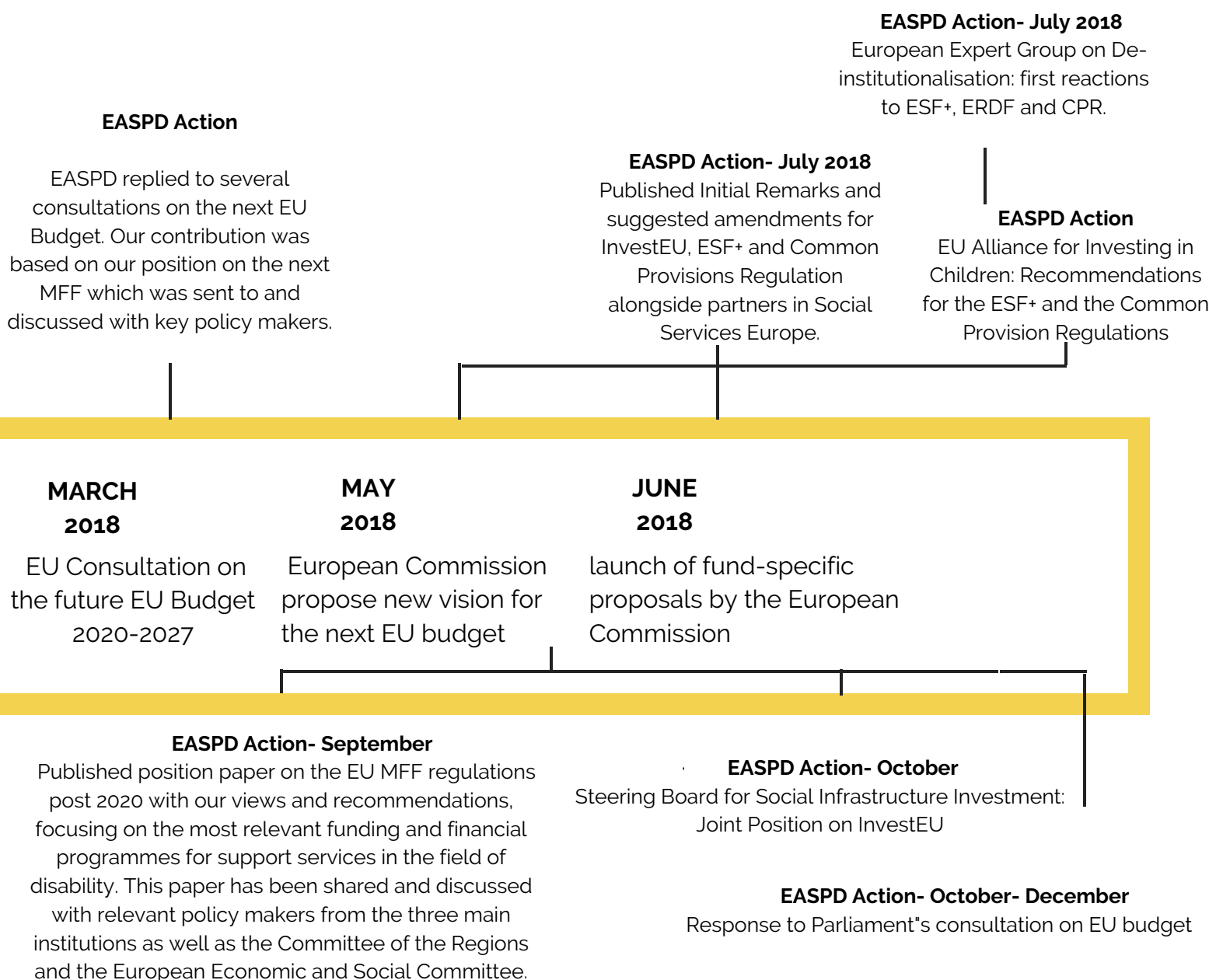
- **A Joint Position Paper on InvestEU, the European Commission's proposal for an investment programme under the next multi-annual financial framework**
- **A Scoping Note for Social Infrastructure Investment, detailing their view on the areas in social, health, education and affordable housing provision where private investment makes the most sense**

Together with the Steering Board for Social Infrastructure, EASPD also organised a large European Conference on "Investing in Social Infrastructure" bringing together over 100 representatives in the field of health, housing, social services and education, as well as Public Authorities and investors.

# THE NEXT LONG-TERM EU BUDGET

The Multiannual Financial Framework (MFF) is the European Union's (EU) long-term budget, which usually runs over several years. The MFF sets the limits on how much the EU will spend on different areas of activity. The current MFF will come to an end in 2020, leading to the need for a new EU budget that will support the EU's activities. Negotiations on the composition of the next EU budget have begun. In 2018 EASPD worked hard to ensure that the EU budget continues to play a key role in funding both innovation and continuity in quality social service provision.

## TO DO THIS WE:



# SOCIAL ECONOMY ENTERPRISES

Formed of a wide variety of enterprises and organisations, Europe's growing social economy is proving that our economies can increase social inclusion and reduce inequalities, while simultaneously fostering economic growth. In 2018 EASPD committed itself to supporting the growth of the Social Economy and inclusive societies.

## HERE'S WHAT WE DID TO DO THIS:

### VARNA DECLARATION

Following a consultation with our members and our European Conference: "Social Economy as an effective model for social inclusion - Social economy enterprises, social services and employment" EASPD launched its joint Declaration in on social economy enterprises. The Declaration outlines the position of disability support services on social entrepreneurship and a vision for the future by identifying key recommendations for the sector and the European institutions. The Declaration also outlines the actions that will be under taken by social economy enterprises to further evolve the social market economy.



[Read the Varna Declaration here](#)

## EVENT ON EMPLOYMENT MODELS WITHIN THE SOCIAL ECONOMY

On the 6th December EASPD and the European Platform for Rehabilitation (EPR) co-organised an event on employment models within the social economy, focusing on the employment of people with disabilities. The event presented the latest research of EASPD and EPR's joint study on employment models within the social economy, with Germany, Lithuania, Norway, and Spain as the target countries. The event also gave an opportunity for national representatives to together discuss their experiences from the ground, the main trends, challenges, and successes and for the European Commission to present their perspective on the employment and people with disabilities.

“

**The social economy is a tool to both improve and guarantee employment for people with disabilities**

Sabrina Ferraina

”



## GLOBAL SOCIAL ECONOMY FORUM (GSEF)

In October, EASPD was invited to participate in the GSEF 2018 Conference in Bilbao, Spain as a consequence of our successful conference on social economy in Varna. EASPD representative Franz Wolfmayr attended and discussed the role of social economy for the inclusion of persons with disabilities. Around 1,700 participants from all over the world showed the importance of social economy. Founded in 2014, the GSEF is a worldwide network of the biggest cities in the world. Its mission is to pursue collaboration between social economy organisations and local governments, creation of quality jobs, fair growth, progress of grassroots democracy and sustainable development.

Franz was invited to speak on the panel "Towards sustainable and inclusive development through Social Economy" and contributed a lot with EASPD's experience in cohesion policies in an unequal European Union.



**Gsef**

**BILBAO2018**  
GLOBAL SOCIAL  
ECONOMY FORUM

# ANNUAL CONFERENCES



## VARNA, BULGARIA

On 14th-15th June EASPD, in cooperation with the National Alliance for Social Responsibility (NASO) organised a European conference in Varna. The conference "Social Economy as an Effective Model for Social Inclusion - Social entrepreneurship, social services, employment" brought together over 350 participants including social services, public authorities and key stakeholders from civil society, to discuss how the social economy can contribute to a more inclusive and sustainable society.



European Commissioner for Employment, Social Affairs, Skills and Labour Mobility, Marianne Thyssen opened the conference with a speech in which she spoke of the importance of the social economy in implementing the European Pillar of Social Rights and highlighted that the future European Social Fund+ and InvestEU will provide investment opportunities for the social sector, including social economy enterprises.





Over the two-day conference participants and speakers::

discussed the EU strategy on social economy

evaluated different concepts and their conditions for success

showed how social economy could contribute to the Sustainable Development Goals of the UN

discussed the social economy concept and its effects on the quality of life of people with disabilities and social cohesion as well as the creation of a more sustainable and inclusive society via its underlying values, initiatives and actions

promoted a disability mainstreaming approach and disability specific initiatives in society and social economy enterprises and organisations in particular

Speaking on the role of social services and the need to support the social economy at the event EASPD Secretary General, Luk Zelderloo, said: "social and support service providers form a vital component of the social economy. Together we can be the drivers of innovation in the social economy".



“  
For EASPD this conference is just the start, and the discussions we hold here in Varna will provide the foundation of our declaration, to support the growth of the Social Economy and the inclusion of all across Europe. We hope that those who have joined us here in Varna and other's will join us in this commitment, to empower people with disabilities to enjoy their rights, find meaningful employment on the open labour market and participate fully in the community.

Luk Zelderloo

”

## BARCELONA, SPAIN

On the 4th and 5th October, Barcelona played host to EASPD's Conference 'Technology and Digitalisation in Social Care.' Organised with the support of of CONACEE, Fundació Tutelar de les Comarques Gironines, Grup Fundació Ramon Noguera, Plataforma Educativa, Som Fundació, ENTELIS Network and ProACT, the event asserted the need for technology-based solutions and assistive technologies to contribute to the provision of high quality, user-centred and community-based support services.



Attended by service providers, public authorities European Commission officials, experts in digitalisation and technology engineers, the conference explored the promising practices currently available in our sector today and discussed how the support and social care sector can unlock the full potential of technology and digitalisation.



Participants and speakers brain-stormed to come up with key messages:

The added value of technology is that it is available at all times and in all places, therefore increasing accessibility and making employees with disabilities more independent

Change management is the key to ensure a shift of mindset in the uptake of assistive technology within mainstream environments.

Technology must be understood as a facilitator and we shouldn't be afraid to try it



The latest technological and digital innovations have the possibility to assist support services as they promote the inclusion and participation of all in the community.

EASPD President Jim Crowe.

## POLICY SEMINAR

On 17th October EASPD hosted its annual Policy Seminar in Brussels to highlight how the EU Budget can maximise the potential of support services and help the EU deliver on its priorities post 2020. The Seminar provided EASPD's members with the opportunity to speak with representatives from the European Commission, MEP Mr Brando Benifei and other civil society organisations. During the event participants discussed how the European Semester and the next long-term EU Budget, can best promote high quality support services for people with disabilities



What our members said:

“ **Very good practices are being developed by small support service providers, who are innovating their service delivery model. These services need better access to public funding to help them upscale their good practices** ”

Evert-Jan Hoogerwerf- speaking on the up scaling of good practices in person centred technology

“ **We need better infrastructure, better funding and better capacity building amongst mainstream communities for them to understand disability issues and the rights for persons with disabilities** ”

Eoin Nash- COPE- Speaking on the situation in Ireland

“ **In Austria in most services you are not able to apply for a loan, the banks say 'no, social is not economical' and that means that, in the beginning, if you want to invest in innovative practices it is very difficult** ”

Franz Wolfmayr speaking on the situation in Austria.

## CONFERENCE OF STATES PARTIES TO THE UNITED NATIONS CONVENTION ON THE RIGHTS OF PERSONS WITH DISABILITIES

On the 13th June EASPD co-hosted a side event at the 11th Conference of States Parties to the United Nations Convention on the Rights of Persons with Disabilities (UN CRPD). The event focused on the role of assistive technologies to enable people with disabilities to enjoy their rights. EASPD Board Member and Chair of EASPD's Interest Group on Person Centred Technology, Evert-Jan Hoogerwerf, spoke on the event's panel and highlighted that Assistive Technologies must be seen as the human rights enablers that they are, in addition to calling for these technologies to be mainstreamed across sectors, to ensure that all people can have their support needs met with the appropriate solutions.

Mr Hoogerwerf was joined on the panel by MEP Adam Kosa and Senior Expert on Disability at the European Commission, Ms Inmaculada Placencia.



**Policy developments in the area of digital technologies often lack a long-term vision, hindering the development of sustainable policy frameworks which support the further uptake of these technologies by the social care sector.**

Mr Hoogerwerf speaking from the event on the future uptake of digital technologies

# INNOVATION AND KNOW-HOW

---

In 2018 EASPD worked to play a leading and convening role in the development of innovative support models for persons with disabilities. To do this we aimed to facilitate further innovation in the sector, identifying and contributing to the design, development and sharing of innovative support models.

## PROJECTS

In 2018, EASPD participated in and coordinated 26 projects.

### WORKFORCE DEVELOPMENT



#### **Disability Leaders of Tomorrow (D-LoT)**

May 2015 - January 2018

Stavros Niarchos Foundation

**Contact:** Carmen Arroyo de Sande

**Coordinator:** EASPD

The project aims at innovating service provision in the disability sector in Central and Eastern Europe (CEE). Through an innovative mentoring training programme targeted at professionals working in managerial positions in service providing organisation, the overall objective is to produce sustainable change in service delivery in line with the UN CRPD principles in CEE countries.



### **Enhance**

January 2018 - December 2020

Erasmus+ Programme

**Contact:** Adriana Popa

**Coordinator:** National Research Council-Institute for Educational Technology

This project will target the specific mismatch between the skills currently offered by nurses working in Primary Health Care (PHC) and those actually demanded by both public health care institutions and private service providers when applying innovative healthcare models centred on PHC.



### **Newscat: New Skills for Customised Accessible Tourism**

September 2016- June 2019

Erasmus+ Programme

**Coordinator:** Fundacion Emplea

**Contact:** Domenico Manente

Newscat gathers organisations with different and complementary expertise (research bodies, service providers organisations, advocacy and umbrella organisations...) in order to increase the competences of professionals of the tourist sector to cope with the diversified touristic demand of persons with disabilities. The project will provide tools and methodologies to improve the skills and competences of tourist guides and other professionals of the tourist sector to deal with new demands and requirements of clients, specifically those derived from the growing share of potential clients with special needs (as people with disabilities or seniors) which demands a customised service to cover their individual needs.



### **Advancing Personal and Household Services (Ad-PHS)**

December 2018 - May 2020

Erasmus+ Programme.....

**Coordinator:** EASPD

**Contact:** Asel Kadyrbaeva

There are two main sectoral activities in Personal and Household Services (PHS): social care and household support, yet with a possible growing overlap between the two. Current societal developments such as changes to family structures increase the need for PHS. Furthermore, the unprecedented and general ageing of our society increases demand for home help and care services. The overarching objective of the Ad-PHS project is to lead to the creation of a platform of relevant PHS stakeholders at EU level. Its main goal is to create a single point-of-contact to support, guide and provide advice to Public Authorities in the development of their PHS policies.



## **EMISC (European Mentoring in Social Care)**

September 2015 - August 2018.

Erasmus+ Programme

**Contact:** Sonia Staskowiak

**Coordinator:** EASPD

The EMISC project delivers support for the role of mentors in social care at entry level, with a formal curriculum and a mentor training course, a mentoring assessment tool and an exploration of ways of promoting formal recognition of such skills.

## **PESSIS+ - Promoting Employer's Social Services in Social Dialogue**

January 2018 - June 2019

European Commission, DG EMPL

**Contact:** Thomas Bignal

**Coordinator:** EASPD

PESSIS+ aims to strengthen the capacity of the Federation of European Social Employers, in view of their participation in European Social Dialogue structures. The project's main activities will include national events in ten EU Member States to engage with relevant national employers, discussions with trade union organisations in view of setting-up the right structures and research on the state of play of social dialogue structures in social services in 28 EU Member States.

## **INCLUSIVE EDUCATION**



### **IIIS : Implementing Inclusion in Schools**

September 2016- August 2019

Erasmus+ Programme

**Contact:** Timothy Ghilain

**Coordinator:** Landes- Caritasverband Bayern

The partners will cooperate to implement inclusion competences among staff and to transfer inclusion theory into practice in primary and secondary schools. For this purpose the project consortium will develop a coaching manual on the basis of coaching processes that will be implemented in the 10 pilot schools.





## **IMAS II: Improving Assistance in Inclusive Educational Settings**

October 2018 - September 2020

Erasmus+ Programme

**Coordinator:** University of Graz

**Contact:** Sandra Nicolau Lima

The previous project IMAS I showed that the working conditions of assistants are characterised by high workloads, little job security, low status in school hierarchies and low qualifications. Based on these findings, the follow-up project IMAS II wants to ensure the further development and strengthening of inclusive competences of learning and support assistants. The aim of the project is to develop 5 web-based knowledge boxes for different topics (e.g. ASD, ADHD, etc.) and to conceive a blended-learning format. These knowledge boxes include videos, power-point presentations, quizzes, etc. which enable an easy and quick way for learning and support assistants to expand their knowledge and to enhance inclusive competences for their practical work.



## **IE+: Promoting positive attitudes and evidence-based policy for inclusive education**

January 2018- January 2021

Erasmus+ Programme

**Contact:** Rachel Vaughan

**Coordinator:** EASPD

'This project aims to provide decision-makers (policy-makers and education providers) with the information, training and tools that allow for evidence based policy making. Through these activities the project will facilitate not only adequate policy frameworks but also their real implementation, with a special focus on the transition from segregated to inclusive education settings.





## **To Inclusive Education and BEYOND**

September 2018 - August 2021

Erasmus+ Programme

**Contact:** Rachel Vaughan

**Coordinator:** EASPD

This project aims to empower special schools and service providers supporting children with special needs, to facilitate the transition towards fully inclusive education systems. The project will provide special schools and service providers with access to targeted information on the potential role of support services, in the transition towards inclusive education, as well as co-produced training. These tools will enable special schools and service providers to promote the acquisition of skills and competencies and support mainstream schools with the transition towards inclusive settings.

## **PERSON CENTRED-TECHNOLOGY**



### **ProACT (Integrated Technology Ecosystem for ProACTIVE Patient Centred Care)**

March 2016 - March 2019

European Union's Horizon 2020 research and innovation programme

**Contact:** Asel Kadyrbaeva

**Coordinator:** Trinity College Dublin: Trinity Centre for Practice and Healthcare Innovation

ProACT targets Europe's 50 million multi morbid patients to proactively self-manage and offset the EU's annual €700 billion cost of chronic disease management. ProACT aims to develop and evaluate an ecosystem to integrate a wide variety of new and existing technologies to improve and advance home-based integrated care for older adults with multi morbidity, including associated co-morbidities.

The ecosystem will connect four key care and support models central to understanding and implementing effective, continued and coordinated patient centric care (including self-management). These models are 1) homecare (including informal care); 2) hospital care; 3) community and social care and 4) social support networks.

## EMPLOYMENT

### Disability, Equality, Security Careers. Back on the ground (DESC 2)

September 2017- August 2020

Erasmus+ Programme

**Contact:** Timothy Ghilain

**Coordinator:** L'ADAPT



Following the first DESC project, DESC 2 project aims to bring the results of the project on the ground. In a first step, the partnership from France, Belgium, Spain and Italy will develop and implement an evaluation methodology to assess the impact of inclusive employment methodologies on persons with disabilities, employers and service providers. The partners will then assess the impact of such methodologies on external stakeholders such as social services, families and employment services, and develop a guide on how to develop sustainable networks with all relevant stakeholders to implement successful inclusive employment strategies. Finally, the project will continue its annual implementation of the European Disability Employment Week (EDEW) in each partner countries, focusing this time on developing sustainable networks to ensure the ongoing success of the EDEW.



### ALL IN! INcredible Practitioners to empower adults with disabilities through Education, Employment & Social Entrepreneurship

October 2018-October 2020

Erasmus+ Programme

**Contact:** Adriana Popa

**Coordinator:** Federatia pentru Accesibilizarea Romaniei

The project aims to equip educators, trainers, HR managers and other experts with proper competences to support high-quality education for adults with disabilities. It will do so by developing practical resources to help these practitioners create innovative adult education settings to support adults with disabilities in progressing towards higher qualifications and entering the labour market. The project will be implemented in 5 European countries: France, Greece, Spain, Romania, Belgium.





## **PATHWAYS (Participation to Healthy Workplaces And inclusive Strategies in the Work Sector)**

May 2015 – April 2018

European Union's Health Programme (2014-2020)

**Contact:** Sabrina Ferraina

**Coordinator:** Fondazione IRCSS Istituto Neurologico  
Carlo Besta

PATHWAYS is a 3-year EU project that aims to develop innovative approaches to promote the professional integration of people with chronic diseases and improve their employability.

## **RIGHTS**

### **Improving the Skills and Competencies in Self-Directed Support (SKILLS)**

October 2017 - September 2019

Erasmus+ Programme

**Contact:** Asel Kadyrbaeva

**Coordinator:** Service Foundation for People with an Intellectual Disability (KVPS)



This project addresses the need to explore and define what systems of self-directed support are in place in Europe and how they can best support individuals with disabilities in exercising choice about their lives.



**Just4All**

### **JustforAll: promoting access to justice for persons with disabilities**

October 2018 - March 2021

European Union's Justice Programme (2014-2020)

**Contact:** Lea Rollin

**Coordinator:** Fundacion Once

The Just4all project aims to promote access to justice for persons with disabilities by raising awareness among legal practitioners on the needs of people with disabilities and develop a training for legal practitioners on that topic.



## **HOPE: Helping Ourselves Prevent Exploitation**

January 2017-June 2019

EU Civil Justice Programme

The project aims to help people with learning disabilities to know what sexual exploitation is, what it looks like in action, what to do about it if it is happening to them or a friend and how to report it. A strong emphasis is on empowering people to keep themselves safe rather than simply concentrating on risk factors.

**Coordinator:** British Institute of Learning Disabilities

**Contact:** Jeff Van Hecke



## **I DECIDE: Supported Decision Making using Digital Literacy & Numeracy skills**

October 2017 - March 2020

Erasmus+ Programme

**Contact:** Carmen Arroyo de Sande

**Coordinator:** Foundation Girona Guardianship

The project focuses on the application of Digital, Literacy and Numeracy skills in three important areas of someone's life as a means of providing increased supported decision making by the individual in these areas: personal finance, consumer rights, and personal health and well-being.



## **Lovelif**

September 2016-September 2019

Erasmus+ Programme

**Coordinator:** Learning Disability Wales

**Contact:** Jeff Van Hecke

The project's objectives are to develop a training programme on relationships and sexuality aimed at supporting staff and family carers across Europe, train people with a learning disability as co-trainers to deliver this training and to hold information events in the different partner countries where the piloting will take place.

## INCLUSIVE LIVING

### AMiD

January 2018 - December 2019

European Union's AMIF Programme

**Contact:** Domenico Manente

**Coordinator:** EASPD



AMiD (Access to services for Migrants with Disabilities) aims to facilitate the assessment of migrants and refugees with disabilities in Europe, improving cooperation among Local Authorities and NGOs and promoting knowledge sharing among NGOs staff, local organisations, Disabled People organisations and Service providers to respond adequately to the disability implications in the migration phenomena.



**CISCOS: Connecting inclusive social planning, community development and service provision for persons with disabilities**

January 2018 - December 2020

Erasmus+ Programme

**Contact:** Asel Kadyrbaeva

**Coordinator:** Centre for Planning and Evaluation of Social Services (ZPE) University of Siegen

CISCOS will develop a cross-border and multidisciplinary teaching and training concept for staff qualification of service providers and local governments together with academic training of university students. The alliance will also facilitate the exchange, flow and co-creation of knowledge between higher education institutions and service providers on how to fully embrace the inclusion paradigm. This will contribute to foster the innovation capacity of higher education institutions, local governments and service providers for persons with disabilities and aligned organisations from the care provision sector.



**TOPHOUSE**

January 2018 - June.2019

Erasmus+ Programme

**Contact:** Carmen Arroyo de Sande

**Coordinator:** ESSL Foundation

Towards Person Centred Housing Services in Europe (TopHouse) is a project that aims to define, refine and formally establish the competences of professionals in the processes of assessment, housing & support/care provision (AHS) to strengthen their ability to assume social and civic responsibilities by actively fostering inclusion and respect for human rights of persons at risk of exclusion, particularly persons with disabilities.

## Advancing and monitoring the rights of people with mental disabilities in neuro-psychiatric residential institutions

January 2016 - April 2019

EuropeAid Programme

**Contact:** Adriana Popa

**Coordinator:** Keystone Moldova

The overall objective of the project is to empower persons in neuro-psychiatric residential institutions and local CSOs to defend and monitor the rights of persons with mental disabilities in Moldova. The partners will promote greater awareness of the rights of people with mental disabilities through their empowerment as self-advocates; will carry on capacity-building of CSOs to enhance and to monitor the CRPD implementation in neuro-psychiatric residential institutions; and aim to combat discrimination of persons with mental disabilities living in neuro-psychiatric residential institutions and promote community for all.

## EARLY CHILDHOOD INTERVENTION (ECI)

### ECI AGORA

January 2018 - April 2020

**Contact:** Timothy Ghilain

Velux Foundation

**Coordinator:** EASPD



The ECI Agora project aims to facilitate the development of ECI services in the partner countries of Bulgaria, Romania, Slovakia, Poland and Hungary. The project will begin by collecting important research on the current state of play in each country and best practices in the field of ECI. To facilitate the provision of high-quality, community-based, person centered ECI services the project will develop a 'toolbox.' This toolbox will provide practical guidance to help professionals and families develop successful models of good practice. Following the creation of the toolbox the project will work with ECI services in their communities and provide training sessions, to support the toolbox's implementation. 'Roadshows' will be held in each partner country to facilitate the development of ECI services at a national level and help to create ECI support networks.



## ARTS

### Sign and Sound Theatre

July 2017- December 2019

Creative Europe

**Contact:** Sydney von Ihering

**Coordinator:** European Network of Cultural Centres



Sign&Sound theatre Europe is created by a group of 9 partners from 6 European countries. The main aim of the group is to promote deaf theatre all over Europe, and in particularly the inclusive bilingual theatre format: Deaf and hearing actors equally on the stage; deaf and hearing audiences equally in the theatre.



### Creative Inclusion in Adult Education

November 2017 – October 2019

Erasmus+ Programme

**Contact:** Sydney von Ihering

**Coordinator:** COPE Foundation

This project aims to improve opportunities in the access to artistic knowledge and development to adult learners with disabilities. It aims to provide improved guidelines and access to relevant information in the teaching of arts to service providers, people with disabilities, cultural centres and arts educators, building a fairer, more equal and less discriminative approach to adult arts education



### Field Aperture: Inclusion in Society By the Arts (ISA)

September 2017 – August 2020

Erasmus+ Programme

**Contact:** Sydney von Ihering

**Coordinator:** L'ADAPT

This project aims to improve opportunities in the access to artistic knowledge and development to adult learners with disabilities. It aims to provide improved guidelines and access to relevant information in the teaching of arts to service providers, people with disabilities, cultural centres and arts educators, building a fairer, more equal and less discriminative approach to adult arts education



# PUBLICATIONS

The need for new knowledge, innovative solutions and evidence based information to support policy developments has been a key priority for EASPD for many years. In 2018 we were especially fruitful in our research and data gathering activities and published several key reports including:

## **EASPD and Zero Foundation Report: Digital Technologies for Service Providers 15 Innovative Practices to advance Social Care**



EASPD and the Zero Project selected 15 technologies that were believed to be of great interest to service providers. The selection was the result of a two-stage process and a qualitative and quantitative evaluation by a dedicated EASPD committee. The three primary selection criteria were Innovation, Impact, and Transferability and of course their relevance for service providers. This Zero Project Analysis was presented during the EASPD conference on "Technology and Digitalisation in Social Care," October 4–5 2018, in Barcelona, Spain.

## **EASPD Report :European Semester and the European Pillar of Social Rights- Support services as key players in the implementation of the European Pillar of Social Rights**



In the framework of its ongoing monitoring of the European Semester process, EASPD organised a number of exchanges with its national members across Europe to discuss challenges, progress and recommendations to EU policy makers on social care systems. This report highlights the main concerns of support service providers in the disability field at national level and includes key recommendations on how the European Union can further address challenges and issues through the European Semester process and the European Pillar of Social Rights.

## Study: Barriers to the wider deployment of person centred technology in services for persons with disabilities



This study was supported by EASPD and its Interest Group on Person-Centred Technology. The study aimed to identify the main barriers and the potential facilitating factors that would enable the uptake of Person Centred Technology (PCT) in the social care sector.

An executive summary was also published which presented the main results obtained in the study which were reported in detail in the deliverables of the project.

## EASPD Report: Provision of social care and support services in remote rural areas

EASPD carried out telephone interviews with service providers in six different countries to gain a better understanding of their perspectives on the link between the provision of support services and rural development. These interviews are presented in a form of case studies which provide valuable insights to the current state of play in different European countries, as well as recommendations and possible solutions for improving access to services in rural areas. This report aims to provide a better understanding of the state of play on the availability of social care & support services in remote rural areas in Europe and to explore ways in which service provision can be improved.



## EASPD Report: The role of services in the implementation of the Convention on the Rights of Persons with Disabilities



EASPD assessed the Convention and its explanatory documents (until end 2018), while consolidating all relevant aspects and mentions of support service providers. This report highlighted the main role of services in the implementation of the Convention, according to the UN. It aspires to give an overview of how support services are considered by the UN.

## Country Fact Sheets on Social Care & Support Services Sector for Persons with Disabilities



As part of its commitment to expand knowledge base on the Social Care and Support Services Sector in Europe, EASPD commissioned fact sheets to reflect the state of play of the social care and support services sector for persons with a disability. EASPD added to new additions to its Country Fact Sheet series and Belgium, Germany, Greece, Italy, Latvia, Netherlands, Poland and Slovenia are now available.

## Boosting Investment in Social Infrastructure in Europe- High level Taskforce

EASPD as part of the High-Level Taskforce on Investing in Social Infrastructure in Europe, provided input to this report published by the European Commission. This final report contains a comprehensive collection of facts and figures on social infrastructure and social services and the related financing needs. Based on the conclusions and results, the report formulates concrete recommendations aimed at enhancing current financing tools as well as for future schemes and initiatives in the social sector.



## Social Service Europe Study on access to care and work life balance



EASPD as members of Social Services Europe, co-financed and contributed to the material in this report that looks into the crucial role of social services in improving work-life balance in Europe. In particular, it covers two issues: assess promising practices of social service provision and their Work-Life Balance (WLB) impact and provide an in-depth analysis of the environment which enables the development of such services.

# EASPD'S LATEST INITIATIVES TO INCREASE EXCHANGE AND COLLABORATION AMONGST MEMBERS

## MIX AND MATCH

"Mix & Match" is an EASPD initiative to bring together members (and non-members) that are interested in sharing their expertise in recruitment, retention and career development of staff in the social sector, facilitating one-to-one communication on practical solutions to tackle challenges and needs identified through the Project Development Workshop in our spring conference in Varna, Bulgaria. More than a follow-up to the Varna workshop, this was intended to be a starting step for applications to the Mobility Fund (Under Erasmus +) in end-October and new projects.



The concept was inspired by the matching of participants according to their areas of interest. Taking in to account the list of participants and the tendency of matching between southern-northern countries, we wanted to be able to match organisations with similar interests and facilitate their communication.

## EXPERTISE NETWORK

The Expertise Network is a new activity that we started working on in 2018 with the view to launch it in 2019. It will be a space of contact among experts and organisations that express needs on certain topics. The Network will be engaged from (and for) our membership and selected experts will help organisations to improve their knowledge and/or to increase their capacities through advice, training or ad hoc recommendations. Next year EASPD will pilot this initiative in five topics (key areas for innovation in support service provision) and three formats (different ways of organising the relations between the expert and the organisation(s)).



# EASPD AS CENTRE OF REFERENCE FOR KNOWLEDGE SHARING

## LUNCHTIME WEBINAR SERIES

Our lunchtime webinars proved popular in 2018, We organised webinars on:

- ➔ **Amplifying your voice on social media**
- ➔ **European Support Models for Inclusive Education**
- ➔ **Effective Project Evaluation**
- ➔ **Person Centred Technology in Erasmus+ project proposals**
- ➔ **Concrete examples of project evaluation**



## D-LOT



EASPD's e-learning HUB provides tools, learning materials, advice and guidance about how to develop and sustain high quality support services for persons with disabilities. The HUB was developed through the Disability Leaders of Tomorrow (D-LoT) project 2015-2017, having kept its name.

The learning platform was made available for everyone wishing to offer or acquire new understanding/new skills and expertise in community-based services that can fuel the real change in the adoption of the social model of disability.

Dlot aims to be a space for training and knowledge sharing through Massive Open Online Courses, forums where debate can be generated and through sharing important pieces of information in the Knowledge Centre.

In 2018, EASPD launched the platform to its members during its GA in Barcelona, explaining the different sections of the platform and the structural changes that the platform would undergo. The design was changed to be more user-friendly while keeping the accessibility requirements.

## EURECO

On 13th March EASPD and the Centre for Planning and Evaluation of Social Services (ZPE) at the University of Siegen hosted the first Forum of the "European research platform for inclusive community planning and service development for people with disabilities (EURECO)." EURECO is a joint initiative of EASPD and ZPE, it was launched in 2017 as a first step towards creating concrete research collaborations among researchers and practitioners. Hosted in Brussels, the Forum of 2018, brought together scholars and researchers from 15 different universities working in the fields of disability, community planning and inclusive services, as well as other experts and representatives of disability service providers. Together these key stakeholders explored how they can jointly contribute to the implementation of research and innovation in inclusive service delivery and planning, in accordance with the UN Convention on the Rights of Persons with Disabilities (UN CRPD).



**Innovation is a mindful deviation or a creation of a new path. But transition to the new path is not straight forward. Services are often trapped in reproducing old practices even when more superior options are available. The stage of implementing the innovation is the most critical. It is therefore important to understand the factors that lead to the successful integration of innovative practices into standard operating procedures of services, organisations, and local policy fields**

Prof. Dr. Johannes Schaedler, ZPE, speaking at the Forum on what constitutes innovation & implementation in disability services

## EU FUNDING INFORMATION

A priority for EASPD is to ensure that European policies help to finance the development of quality social care and support services throughout Europe. It is within this priority that EASPD has been active in making sure that the EU Investment Plan supports such investment into the social services sector. Last year we developed a website to help social service providers get access to better loans through EFSI and/or other European financing mechanisms. This website is now available in 7 languages!



[www.socialinvestment.eu](http://www.socialinvestment.eu)

# MEMBERS-LED APPROACH

---

This year EASPD pursued key objectives to strengthen its governance processes and its relevance in the social sector field, to further secure EASPD as a members-led approach. We aimed to achieve the greater participation of members and better measure the impact of EASPD's activities.

## NEW MEMBERS

In 2018, we welcomed new members to the EASPD family.

### SAVE THE CHILDREN ARMENIA



### KONEKT, BELGIUM



### EUROPEAN NETWORK FOR ACCESSIBLE TOURISM, BELGIUM



### HEALTH LIFE ACADEMY CROATIA



**AS HOOLEKANDETEENUSED**  
ESTONIA



Tegusama  
elu kodud

**CITIZEN ASSOCIATION FOR  
SUPPORT OF PERSONS  
WITH DISABILITY SOLEM**  
NORTH MACEDONIA

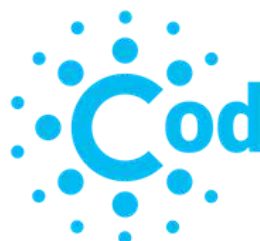


**СОЛЕМ**

**EP.SY.ME**  
GREECE



**COD**  
KOSOVO



**EUROPEAN CONFEDERATION  
OF INCLUSIVE ENTERPRISES**  
FRANCE



**DIZABNET**  
ROMANIA



**SOCIAL SKILLS ANIMATION**  
SERBIA



**PLENA INCLUSION**  
SPAIN





# EASPD WORKING GROUPS

The Standing Committees (SC) represent the interest of EASPD in their own field through active research, policy development, advice and networking.

## **THE SC ON EDUCATION:**

focuses on education, lifelong learning and the development of inclusive schools. In 2018, the Committee has released the video: 'Towards more inclusive learning environments', which followed the path towards inclusion for a school boy in France. The Committee also hosted a webinar on "Pathways towards inclusion: European Support Models for Inclusive Education", which explored the European Support Models and their contribution to facilitating the transition towards inclusive education.

**Chair:** Valerija Buzan as of December (Formerly Bernadette Grosyeux)

**Facilitator:** Rachel Vaughan

## **THE SC ON INCLUSIVE LIVING:**

focuses on the main obstacles faced by organisations in the promotion of the transition from institutional to community-based care. In 2018, the Committee conducted an internal survey to identify priorities and needs of the EASPD members that deliver support services and/or are involved in deinstitutionalisation issues. In addition, the Committee discussed information on the state of play of the next EU budget post 2020 negotiations and shared information on the European Care Certificate and its relevance for staff training.

**Chair:** Peter Saxenhofer as of December (Formerly Valerija Buzan)

**Facilitator:** Sabrina Ferraina

## **THE SC ON EMPLOYMENT:**

focuses on employment-related policies and job-related service developments. In 2018, the Standing Committee organised a major conference in Varna. Next to this group, two permanent working groups exist in the SC: WG on the EASPD Employment Strategy and the WG on Research & project Development. The first group worked in on policy issue such as the Varna Declaration in collaboration with the EASPD Policy Team. The second group developed a first project idea "Revolving Doors".

**Chair:** Fabrizio Fea

**Facilitator:** Lea Rollin as of December (Formerly Sonia Staskowiak)

## **SC ON POLICY IMPACT GROUP (PIG):**

measures and influences the impact of European policy and legislation on the disability sector. In 2018, four EASPD Policy Updates were developed, presenting the state of play of EASPD's policy work on the EU policy-making process. Members of the Group were consulted, and discussions were held on a variety of EASPD's policy activities including on Public Procurement, the EU elections, Social Impact Measurement, the European Semester, the European Pillar of Social Rights, Social Investment and the EU Budget.

**Chair:** Kirsi Konola

**Facilitator:** Thomas Bignal

The Interest Groups are permanent working groups focusing on one single issue which has a more limited impact on the sector

## **IG ON EARLY INTERVENTION:**

is a group that promotes the building of an effective inclusive society by including persons with disabilities in every step of their lives and from the very early stages of life. In 2018, this group finalised the development of a database of practitioners from the EASPD membership working directly in the field of early childhood intervention and developed a survey to assess the needs of the sector. Additionally, this group organised a training between two members to support knowledge and expertise-sharing amongst the membership.

**Chair:** Vasilka Dimoska

**Facilitator:** Timothy Ghilain

## **IG ON PERSON CENTRED-TECHNOLOGY:**

is a special working group on ICT and Assistive Technology, which assesses the benefits that new technologies can bring to disabled people in areas such as communication, employment, commerce, learning, independence, safety and free time. The group gathers information on what is being achieved across Europe in this field, to disseminate information, support projects and contribute to the development of EU Policy. In 2018, this this group organised the EASPD conference in Barcelona and provided more information to members on Person centered-technology-related issues.

**Chair:** Evert-Jan Hoogerwerf

**Co-Chair:** Sarah Weston

**Facilitator:** Domenico Manente

## **IG ON WORKFORCE DEVELOPMENT AND HUMAN RESOURCES:**

measures and influences the impact of European policy and legislation on the disability sector. In 2018, four EASPD Policy Updates were developed, presenting the state of play of EASPD's policy work on the EU policy-making process. Members of the Group were consulted, and discussions were held on a variety of EASPD's policy activities including on Public Procurement, the EU elections, Social Impact Measurement, the European Semester, the European Pillar of Social Rights, Social Investment and the EU Budget.

**Chair:** James Churchill

**Facilitator:** Asel Kadyrbaeva

## **IG ON ARTS AND CULTURE:**

provides a platform for the exchange of information, good practices and the sharing of common concerns in the field of supporting access to arts and culture. In 2018, the chairman of the Interest group Eoin Nash attended the European Day of Disabilities at the European Commission for the European Year of Cultural Heritage and it was decided that EASPD's annual autumn conference in 2020 would take on an arts and culture theme.

**Chair:** Eoin Nash

**Facilitator:** Sydney von Ihering as of December (Formerly Pepe Escrig)



# PROVIDER FORUMS

The idea behind our Provider Forums and membership visits is to unify and strengthen the voice of service providers at national level and improve their ability to create partnerships for projects, In 2018 we organised several membership visits and provider fora:

## **FINLAND**

On the 3rd May, EASPD organised a Provider Forum and EFSI Seminar in Helsinki with members KVPS on "EU Financial Instruments & innovation in social services"

## **SPAIN AND PORTUGAL**

With the Regional Government of Extremadura and the support of the Association of European Border Regions, EASPD held a Provider Forum in Badajoz on the 11th June. The main topics were EU Financial instruments & innovation in social services and the European pillar of social rights and quality social services.

## **NORWAY**

On the 4th September EASPD visited Helsefynd in Norway to discuss topics of interest such as the prevention of violence and abuse against persons with intellectual disabilities and the rights and security of children, with local service providers.

## **GREECE**

On the 5th September EASPD held a membership visit in Athens where the plan to create a new network of service providers in Greece was on the agenda.

## **SERBIA**

A Provider Forum was held in Belgrade, Serbia on the 27th September together with Association Half Way there. They discussed creating optimal conditions for work engagement and employment of people with disabilities.

## **ROMANIA**

Together with Dizabnet, EASPD organised a Provider Forum where they discussed the current status of contracting social services in Romania and explored legislative frameworks and good practices.

## **FRANCE**

On the 11th December, together with Générations Mutualistes and Centre de la Gabrielle, EASPD organised a Provider Forum in Paris which discussed access to care, inclusion and financial instruments.

# HUMANS OF EASPD

In 2018 we launched our new campaign based on the hugely popular "Humans of New York". Our aim was to highlight the positive impact support service providers have on the daily lives of individuals and their communities. We have collected unique stories from many individuals to highlight how important support services are in their lives and through this aim to promote the good work of our members and influence stakeholders to pay more attention and support their work. Keep an eye out for our inspiring stories on social media!



# EASPD COMMUNICATIONS NETWORK

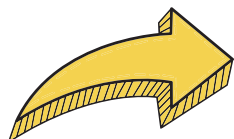
In 2018 EASPD launched its Communications Network. Composed of those responsible for the communications within our member organisations the Network aims to promote the exchange of expertise, experience and knowledge to support the communication activities of our members. Via the online platform the network's members can share information and ideas with each other, on the topics that are most important to them and gain support from EASPD's own communication officers.

To celebrate the launch of the platform the new Network hosted its first lunchtime Webinar, where we invited a communication specialist, Benjamin Wilhelm from the Dandelion group, to tell us more about a number of tools, ideas and tips that could help the members of our Communications Network measure the impact of their communications, before using this knowledge to amplify their content further on social media.

The Network current has over 25 members. Interested members can join by contacting Rachel Vaughan, EASPD external communications officer



# FINANCIAL REPORT



## REVENUES

€ 1,965,956

### REVENUE BREAKDOWN

MEMBERSHIP FEES 2018

€224,900

PROJECTS

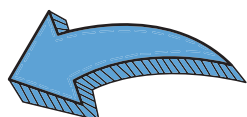
€946,260

STRUCTURAL FUNDING

€581,862

OTHERS

€212,934



## EXPENDITURE

€ 1,911,815

### EXPENDITURE BREAKDOWN

STAFF

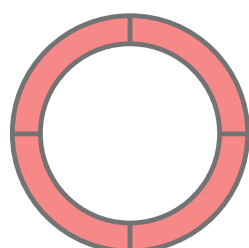
€801,439

OTHERS

€1,010,100

RUNNING COSTS

€100,276



## NET RESULT

€54,141

# CONCLUSIONS BY OUR SECRETARY GENERAL

LUK ZELDERLOO

What a year 2018 has been! In the first year our new Multi annual Strategy: 'Commit!' we've grown as an organisation, with more members joining us, an expanding secretariat and our participation in an increasing number of projects. So, how did we commit? Our Strategy is built on 3 pillars:

## REPRESENTATION, INNOVATION & KNOW-HOW, MEMBER- LED APPROACH

In 2018 negotiations on the next long-term EU Budget began to heat up. Over the last year we've listened to our members and we have made sure that their voices are being heard in the debate. We want an EU Budget that invests in the provision of high quality support services, to ensure that the EU delivers on the issues that matter most to Europeans. The next EU Budget should contain important building blocks to realise the ambition of the UN CRPD and the European Pillar of Social Rights, but to realise this, greater investment into the support services is needed, to enable the sector to recover from 10 years of under investment. The negotiations on the next EU budget will not stop in 2019 and neither will EASPD.



We will continue to listen to the needs of our members and work alongside policy makers and civil society to ensure that the EU Budget maximises its positive impact on the day to day lives of people in Europe.

Our members stand at the heart of our work driving us forward. In 2018 we have worked harder than ever to strengthen EASPD's member-led approach and promoted the transfer of knowledge and expertise from within of our membership through new tools such as EASPD's Expertise Network.

2018 was a good year, but, under the guidance of 'Commit,' EASPD will work hard to ensure that 2019 is even better.

**Luk Zelderloo**

EASPD Secretary General





EUROPEAN ASSOCIATION  
OF SERVICE PROVIDERS  
FOR PERSONS WITH  
DISABILITIES - EASPD

HANDELSTRAAT/RUE DU COMMERCE 72  
1040 BRUSSELS-BELGIUM  
+32 (0) 22337720



[info@easpd.eu](mailto:info@easpd.eu)