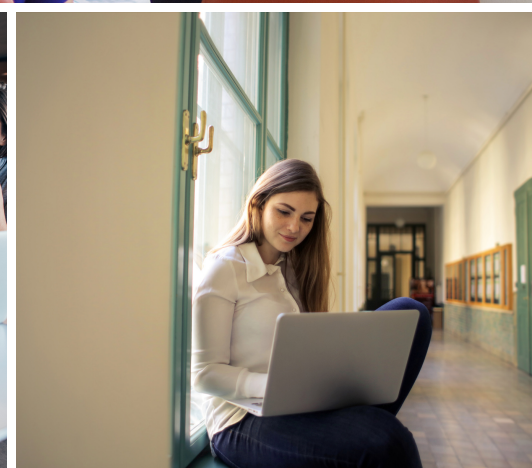




**InclUDE**

# Inclusive University Digital Education (InclUDE)

Promoting the realisation of accessible and inclusive higher education opportunities for students with special educational needs.



## KEY INFORMATION:

- Duration: 15 months from 30/06/21-10/08/2022
- Funding: Erasmus+
- Funding agreement 2020-1-UK01-KA226-HE-094428
- Contact us at [inclUDEProjectErasmus@gmail.com](mailto:inclUDEProjectErasmus@gmail.com)

## PARTNERSHIP:

- Coordinator: University of Wolverhampton 
- Universitaet Klagenfurt 
- Université Rennes II 
- European Association of Service providers for Persons with Disabilities 



**InclUDE**

## THE INCLUDE PROJECT WILL BENEFIT:

- *Higher Education Lecturers*- who can use the project's repository of online tools and guidelines on accessibility and inclusion.
- *Students* - who will benefit from lecturers using best practices in online teaching.
- *Support service providers*- who will be able to use the project's resources to support education institutions to become more inclusive.



## The InclUDE project will

1

Provide an easy way to search and access free and open tools for online accessibility via the project's repository.



Create guidelines of considerations that can help lecturers to make their teaching scheduling and practice more inclusive.

3

2

Create a practical, step-by-step resource that guides lecturers through setting up online teaching sessions that are accessible to a wide range of students.



Co-funded by the  
Erasmus+ Programme  
of the European Union