



THE EMBRACE NEWSLETTER

EMBRACE



EARLY CHILDHOOD EDUCATION AND CARE (ECEC)

The EMBRACE Project aims to:

- To develop inclusive values and attitudes among ECEC educators.
- To equip ECEC staff and leaders with the needed tools and knowledge to foster a culture of inclusion.
- To raise awareness about the importance of inclusion of children with intellectual disabilities in ECEC.
- To increase the visibility of children with intellectual disabilities and deconstruct stereotypes.



www.embrace.project.eu

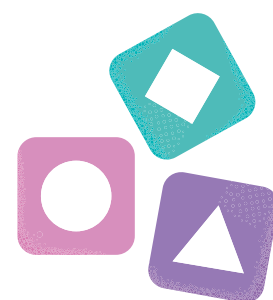
@embraceeuproject

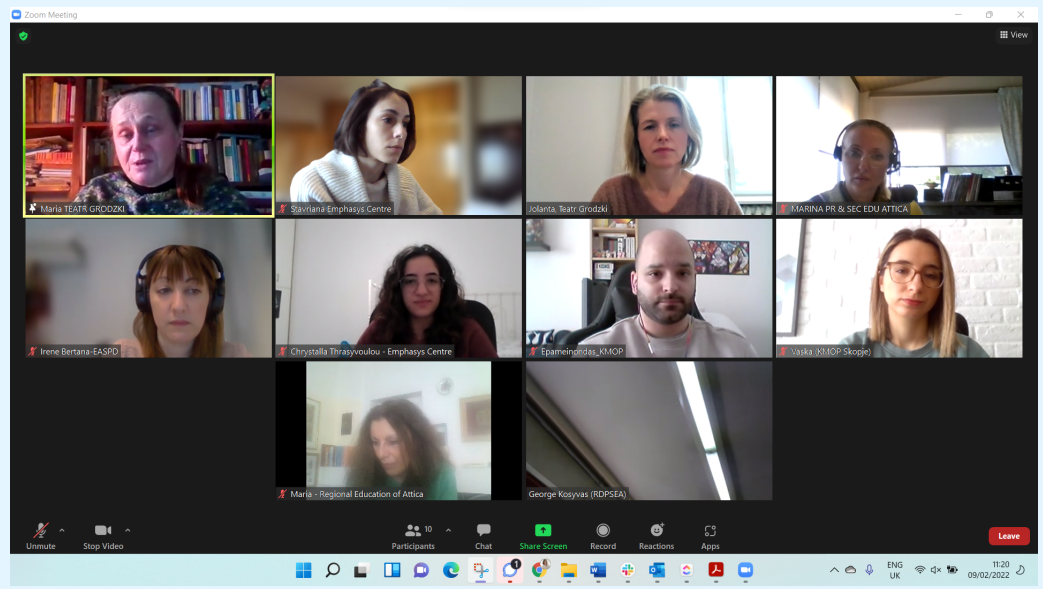


@embrace_erasmus

Target Groups:

- Individuals working at ECEC settings i.e. educators, assistants.
- Parents of pre-school children.
- Organizations active in the field of ECEC.





The Kick-Off Meeting

During the **online Kick-Off Meeting** of the **EMBRACE** project, the partners discussed the **main objectives of the project** and the Project Results that must be developed. In addition, the consortium elaborated on the matters related to Quality Assurance, Evaluation and Dissemination.

“ Research shows that children with intellectual disabilities participate less in ECEC than their peers. ”
European Commission, 2021

Did you know?

54% of children with disabilities were cared for by their parents only, vs. 32% of nondisabled children.

European Commission, 2021

Upcoming Activities

The project will be initiated with a **desk research** to identify the opportunities for informing ECEC staff on topics such as inclusive ECEC for children with intellectual disabilities in each county. The following tasks include the development of an **'E-Learning Course'**, an **'Inclusion Handbook'** and an **'Awareness-raising Toolkit'**.



The European Commission's support for the production of this publication does not constitute an endorsement of the contents, which reflect the views only of the authors, and the Commission cannot be held responsible for any use which may be made of the information contained therein.



Co-funded by the European Union